



G.D Goenka Public School

Saderbal, Lal Bazar Srinagar, J&K - 190023 - Affiliated to CBSE Vide No.730090
Email: info@gdgoenkasrinagar.com, Ph. No. 9070102020, 9070103030 - www.gdgoenkasrinagar.com



Name _____

Class:UKG

Section: _____

Adm.No. _____

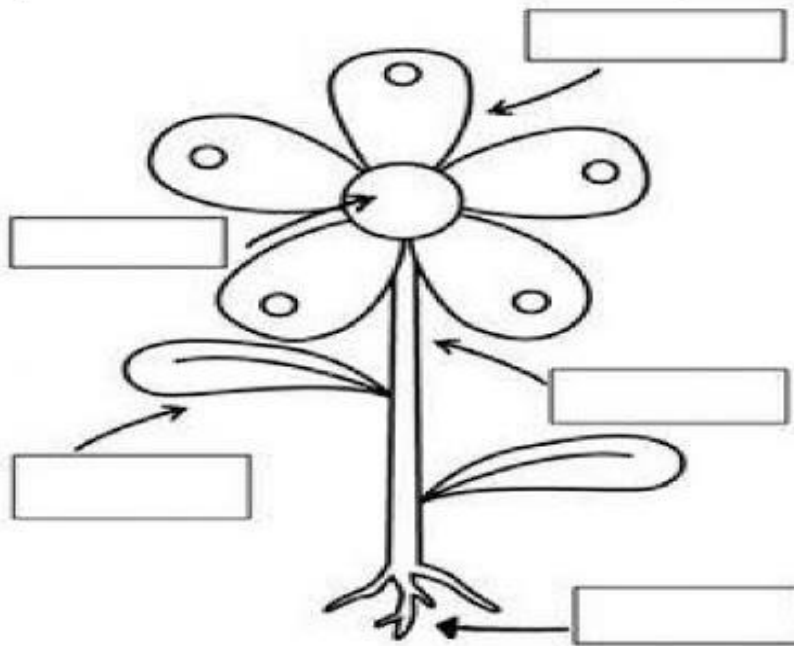
Subject:EVS

Winter assignment

PARTS OF PLANTS

Instructions: Label the parts of plants.

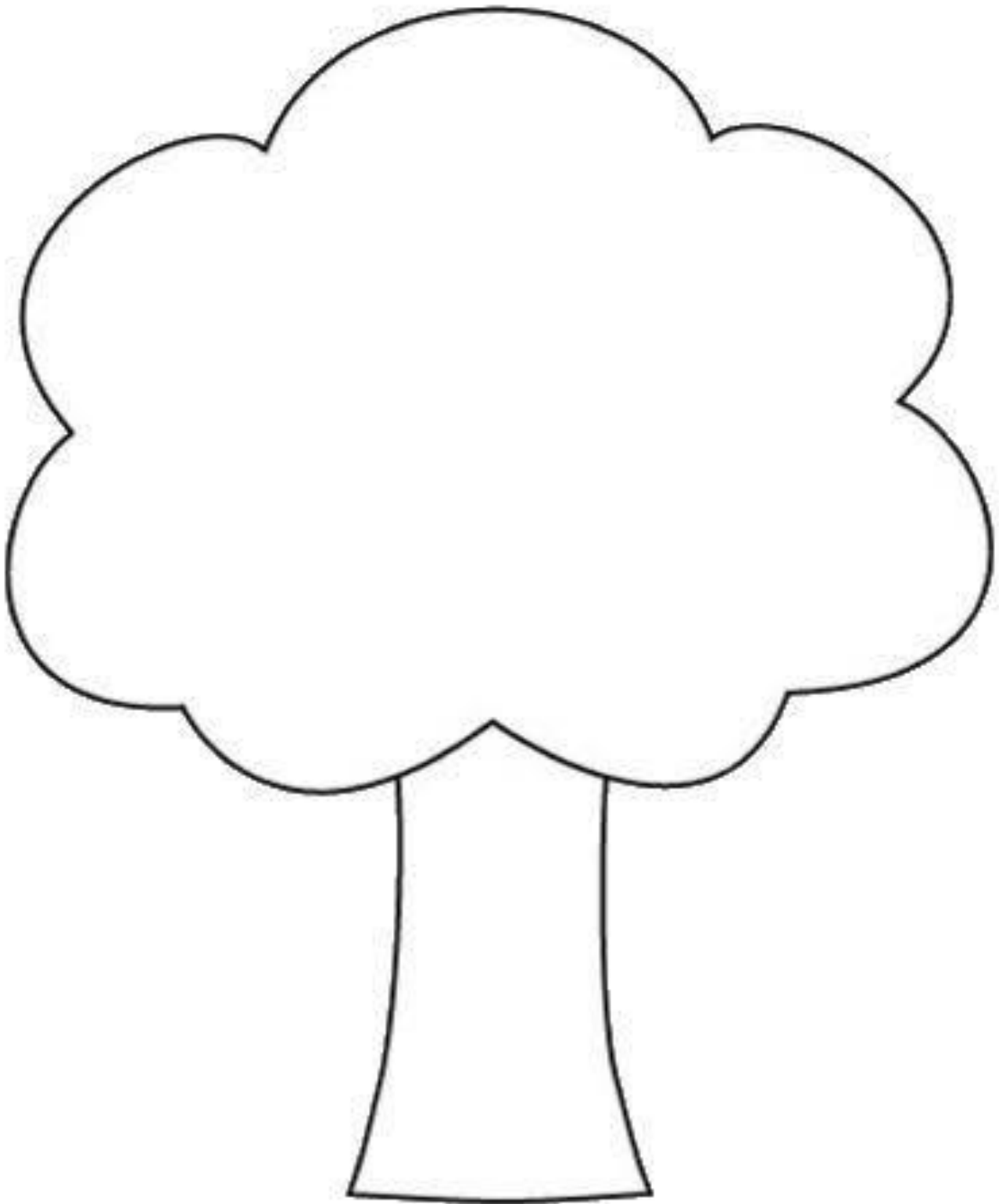
Flower seed leaf stem root



Draw beautiful part of plant in the given box.



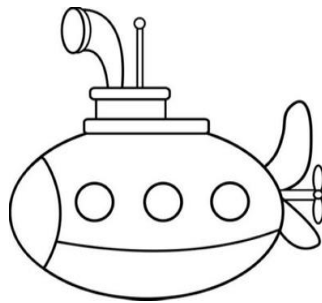
Paste cereals, pulses,nuts etc on the given tree and colour the trunk of the tree:

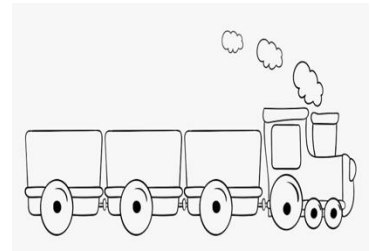


Q. Write the names of vehicles below with the help of help box and colour the pictures.

a) Train b) Submarine c) Hot Air Balloon







Name the plant and Colour the picture



What do plants need to grow?

Color the pictures. Match each picture with the correct word



sun



air



soil



water

Match the pictures of my body parts to their names.

Mouth



Legs



Eyes



Ears



Hands



Complete the sentences with the given words.

breathe wind animals oxygen touch

Air is all around us. We cannot see, or taste air.

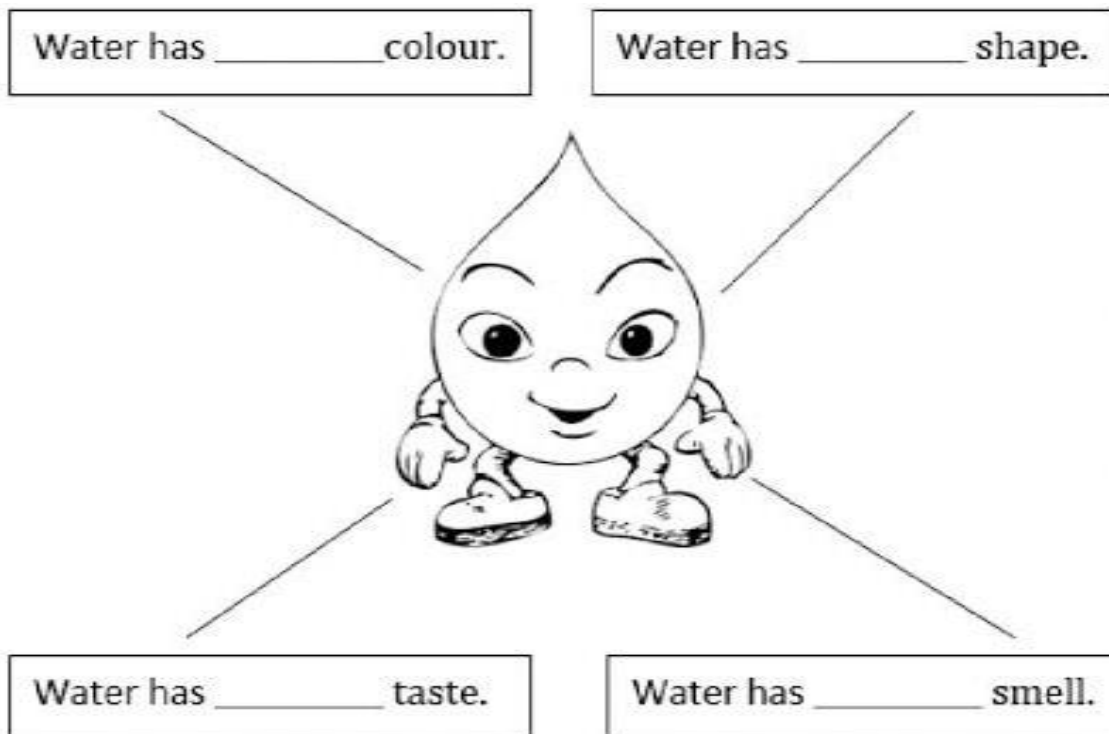
Moving air is called . We can feel wind.

Air is a mixture of different gases, like .

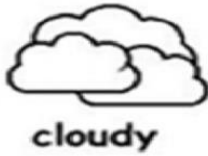
People, plants and need air to .



Q. What do you know about water?

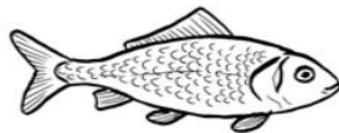


Match the weather picture to the right situation.



Living Things or Non Living things

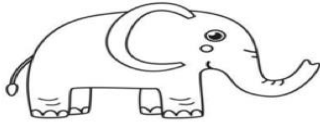
Directions: Write LT if the pictures is living things and NLT for Non-living Things.



WORD SCRAMBLE



gorf



paheeltn



ritge



nlio



ykmnoe

Circle the living things.



Draw a living thing.

Draw a non-living thing.